



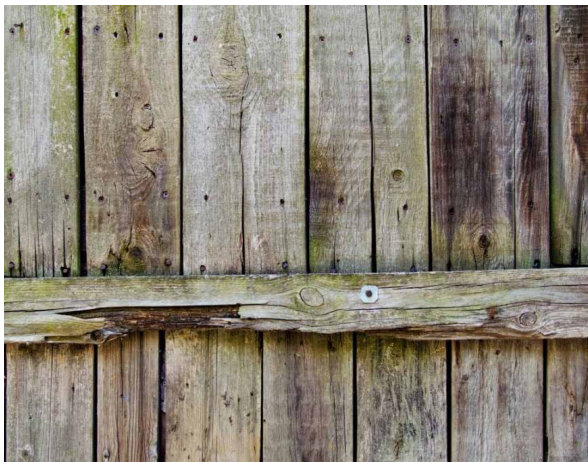
EVOLVER
THE EVOLUTION OF FENCING

A PRODUCT BY

EVA-LAST®
INSPIRED BY NATURE, DESIGNED FOR LIFE.

ALUMINUM FRAMED BAMBOO COMPOSITE FENCING

DISADVANTAGES AND LIMITATIONS OF TRADITIONAL WOOD FENCING



Wood fence

Disadvantages

- Wood has a limited life, between 5 to 10 yrs depending on level of maintenance.
- Decomposing wood is vulnerable to fungus and rot.
- Needs painting and maintenance on regular basis.
- Over time wood dries, fades, cracks and warps.
- Usually there is no warranty on wooden fence because of the nature of wood.
- Vulnerable to termite infection.



CAREFREE COMPOSITE FENCING

Oasis composite fencing brings privacy and peace of mind to your outdoor oasis. Choose from its natural color range and customizable style options to get the look you want. Enjoy the hassle-free lifestyle it offers thanks to its low-maintenance and weather resistant features. Feel good knowing you've chosen an eco-friendly alternative to traditional wood fencing.



CUSTOMIZABLE



LOW MAINTENANCE



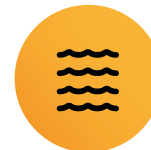
NATURAL AESTHETIC



DIRECTIONAL FLEXIBILITY



WEATHER RESISTANT



CORROSION RESISTANT



INSECT RESISTANT



ECO-FRIENDLY

CHOOSE YOUR ANGLE



Evolver offers both a square and octagonal post, which accommodates the most simple to the most complex angled yards and spaces.

Unlike traditional posts an octagonal post allows for easy 45° direction changes, facilitating seamless transitions between odd angled fences.



SQUARE POST



OCTAGONAL POST

TRI-COATED ALUMINUM

3 Step Aluminum Preparation Process:

1. Sand blasted

To clean the aluminum and prevent an uneven coating which may later result in pitting.

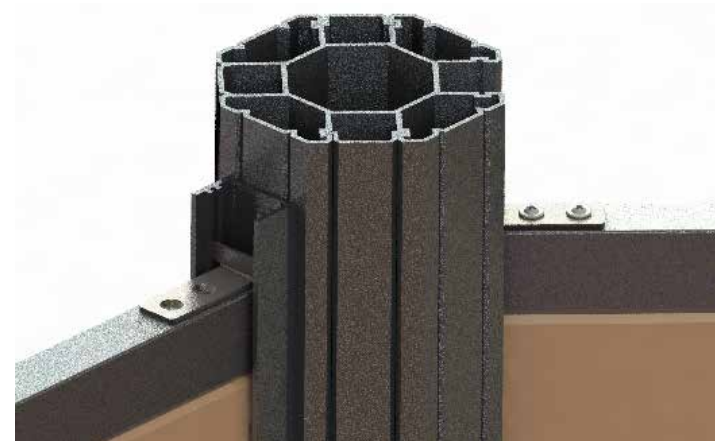
2. Anodized and Dipped

Forms a stable passive layer that protects aluminum from corrosion and further oxidation.

3. Baked

Catalyses polymerization of the coating providing a more robust overlay, this ensures a tough coating that provides additional resistance to weathering.

The Tri-coating is designed to prolong the life of the aluminum structural framework, making it the perfect accompaniment to the weather resistant composite boards.



Pitting

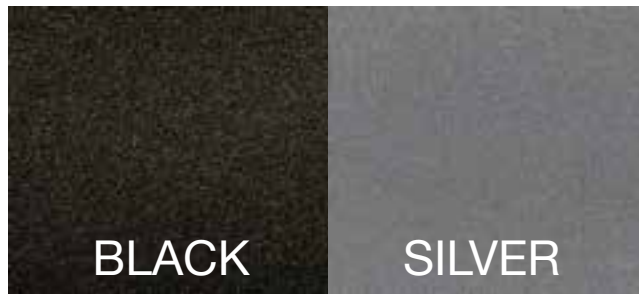


Corrosion

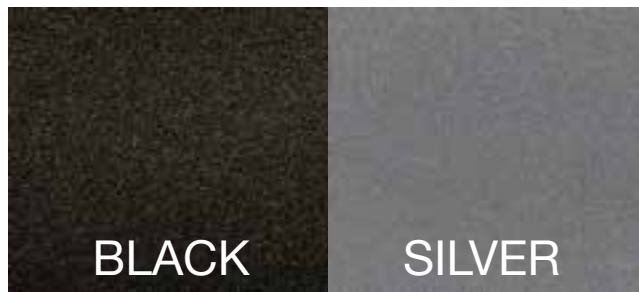
Impact on untreated aluminum after years in a harsh environment.

FRAMEWORK COLORS AND FINISH

Aluminum framework & accessories available in:



Plastic post cap also available in:



ALUMINUM MATERIAL - COATED

- CORROSION RESISTANT
- WEATHER RESISTANT
- UV RESISTANT
- FADE RESISTANT
- MOULD RESISTANT
- INSECT RESISTANT
- LIGHTWEIGHT

COMPOSITE PROFILE OPTIONS

Infinity

Capped Bamboo Composite Fence Board



Dimensions

0.79" x 8.27" (20 x 210 mm)

Evolver fence is available in Infinity, a capped hardy bamboo composite profile with unique streaked and variegated color technology, this ensures no board is the same.

Infinity

Capped Bamboo Composite Fence Board

Color options:



0.79" x 8.27" (20 x 210 mm)



FSC certified bamboo composite product



ULTIMATE DURABILITY



STAIN RESISTANT



EXCEPTIONALLY LOW-MAINTENANCE



DECAY & WEATHER RESISTANT

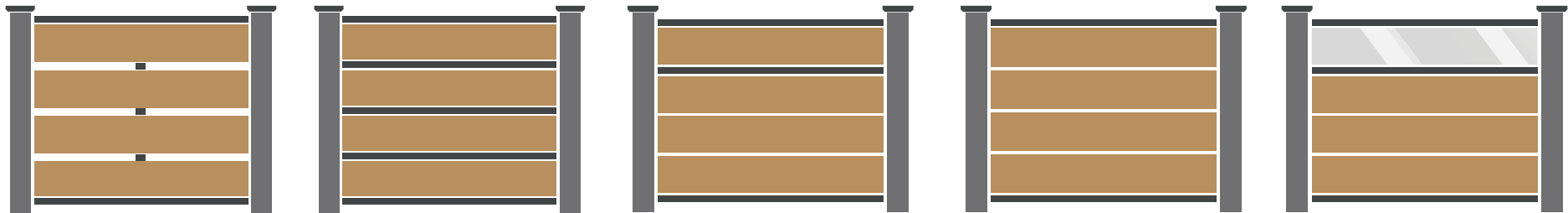


RESILIENT PROTECTIVE CAP



NATURAL LOOK

FENCE INSTALLATION DESIGNS



Semi-privacy

Reinforced

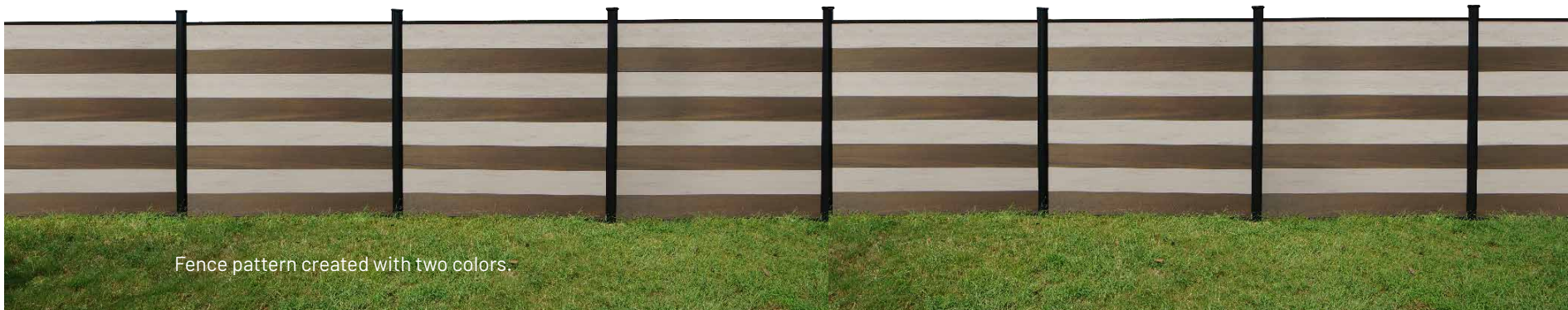
Decorative

Privacy

Portal

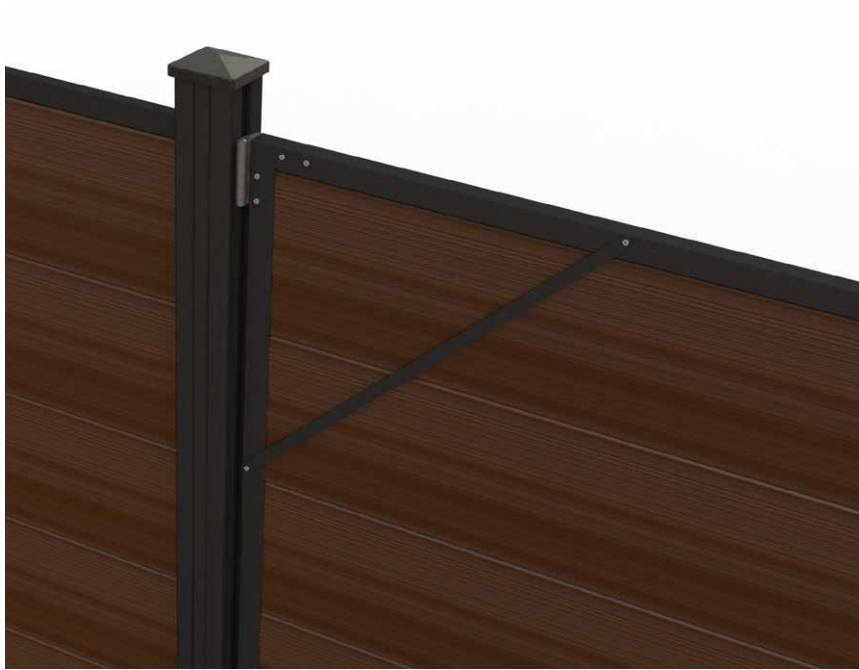
Evolver can be installed in several suggested designs, each with their own benefits.

The Evolver fence system is made to last with an anodized framing and post system that integrates perfectly with low-maintenance bamboo composite fence boards. This fence system offers multiple attractive styles and finishes and is the perfect privacy or border fence.



Fence pattern created with two colors.

EVOLVER GATE



The Evolver fencing system would not be complete without the Evolver gate. Evolver is now available with two hinged gate options for convenient and easy access to your area. Use only one panel for a small entry way, or two panels for a wider entry way. Also available in two different width options.

Sizes: 4' panel and 3' panel (Height of 6' or 8')

COMPONENT PROFILE IMAGES

Aluminum square post



Aluminum octagonal post



45° aluminum
directional converter



Aluminum sliding
post cover



Aluminum
intermediate structural
decorative beam



Aluminum bottom rail



Aluminum top rail



Aluminum or plastic
post cap



Aluminum top rail
fixing clip



Stainless steel cross-head
screws



Aluminum bottom rail
support

ASSEMBLY | Standard



1.

Install post mount.



2.

Install post, slide the bottom rail support in followed by the bottom rail. The support can be adjusted to easily control the level of the rail.



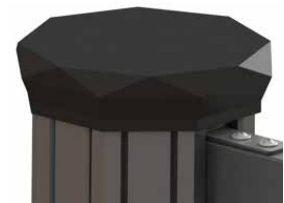
3.

Slide fence profiles down the post groove, use intermediate profiles if desired.



4.

Simply stack fence and auxiliary profiles to desired finish, and finish by clicking the top rail into place.



5.

Fasteners and cap are then used to fix the fence system into place.

ASSEMBLY | 45° direction change



1.

The 45° directional converter can be added to any of the closed sides of the post using our stainless steel pan-head fasteners.



2.

A bottom rail support can be added to easily control the level of the rail.



3.

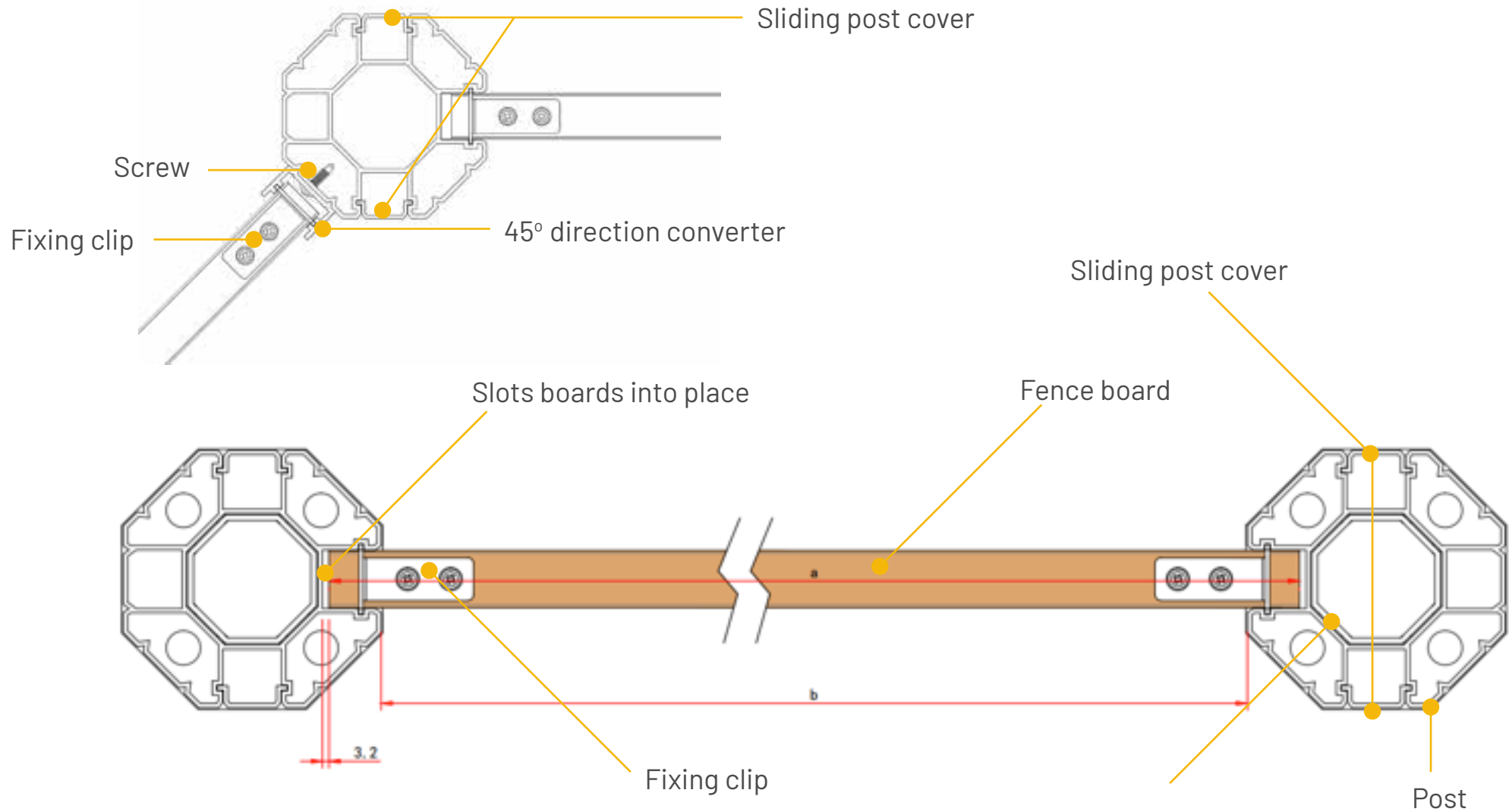
Rails and fencing boards are then simply slotted into place.



4.

Fastener and cap are then used to secure the fence system into place.

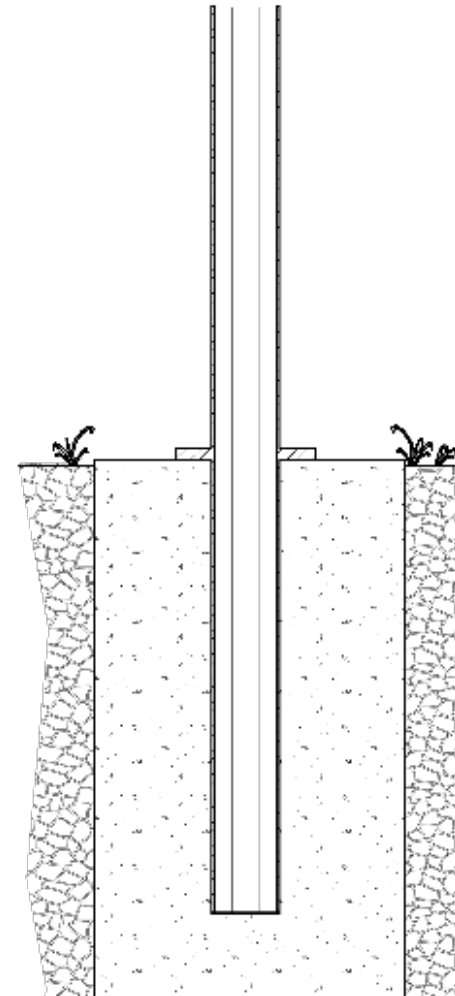
ASSEMBLY | Detail



ASSEMBLY | Post mounting

Octagonal post is embedded into the ground. The general rule when setting a post is that the depth of the post's hole needs to be one-third of the actual above-ground height of the post. This may vary depending on the weight of your fence, soil conditions and local climate.

Additionally, the diameter of your post hole should be three times the diameter of your post.



EMBEDDED POST

DIRECTIONAL FLEXIBILITY

Unlike traditional posts the octagonal Evolver post allows for easy 45° transition, facilitating seamless transitions between odd angled yards and spaces.

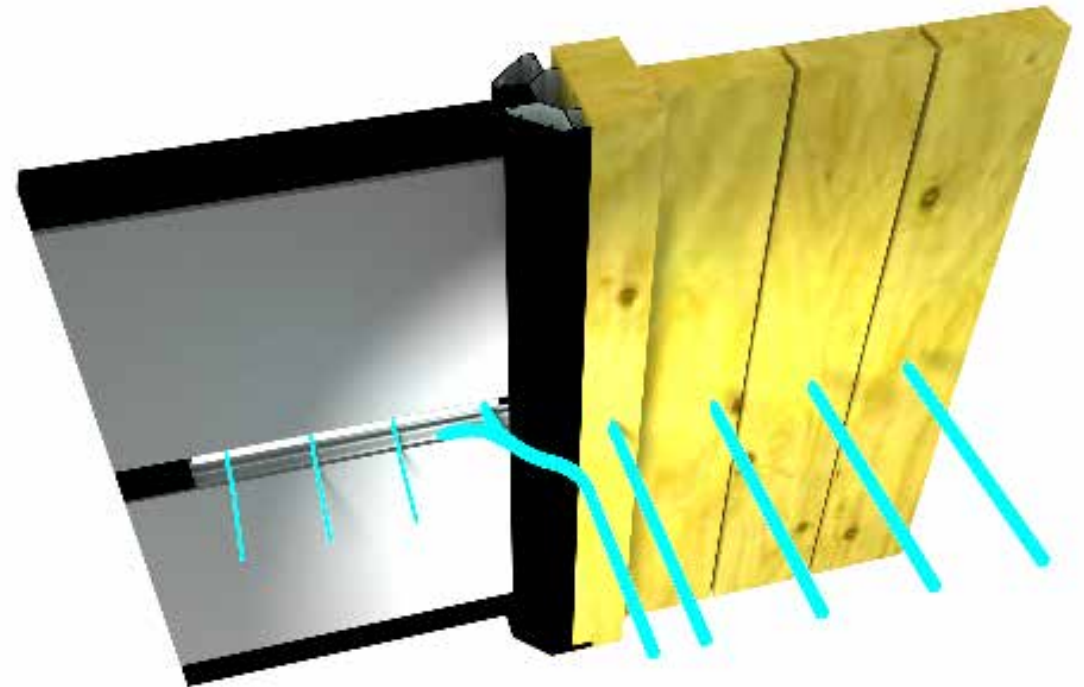
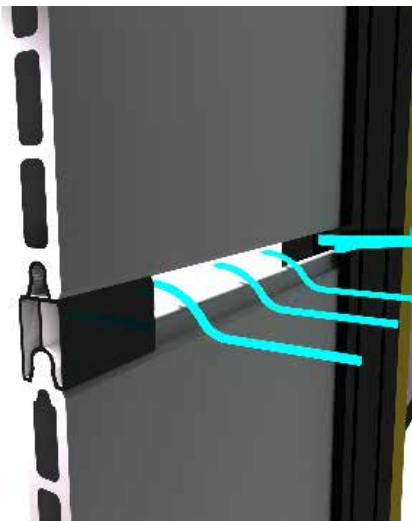
The additional four flat faces also allow for precision positioning of fence panels, which would often prove difficult with a round post.



WIND RESISTANT ROBUST DESIGN

Unlike a standard square post, the octagonal shape of the Evolver post naturally deflects wind, through slats or along the boards, reducing the wind load on the system.

In areas prone to high winds, stress on the fence system can be mitigated using gaps between the boards.



EASY SLOPE CORRECTION

Improved versatility/slope correction

Provided in 100 mm and 2 x 30 mm supports per post pack. Horizontal yards only require the 30 mm support, while the additional 100 mm support will allow you to cater for uneven terrain.

The bottom rail support can be cut to different lengths in order to assist with slope corrections.

Aluminum and composite are easy to cut using standard cutting tools.



CHILD & PET FRIENDLY

The perfect option for pet owners and parents.

BENEFITS:

- Scratch resistant
- Splinter resistant
- Low maintenance
- Easy to clean
- Eco-friendly
- Non toxic



CONVENIENT PACKAGING

Pre-packaged sets for your convenience.

Pre-cut for easy installation.

Quick & simple assembly - just slide the parts into place.



- Pre-packaged fence components:
- Posts / Rails / Boards / Accessories



Single fence unit

**LOW ENVIRONMENTAL IMPACT**

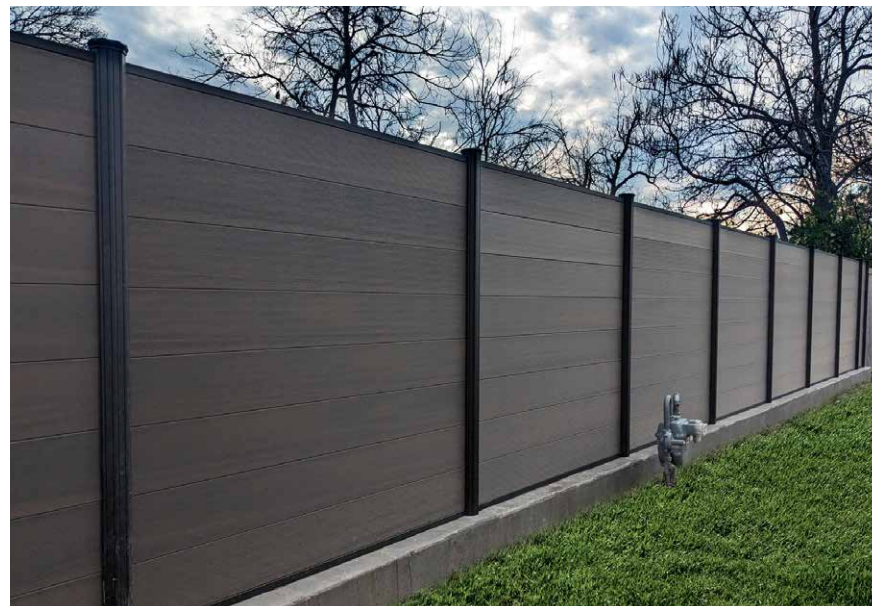
Holistically sustainable manufacturing & use of raw materials

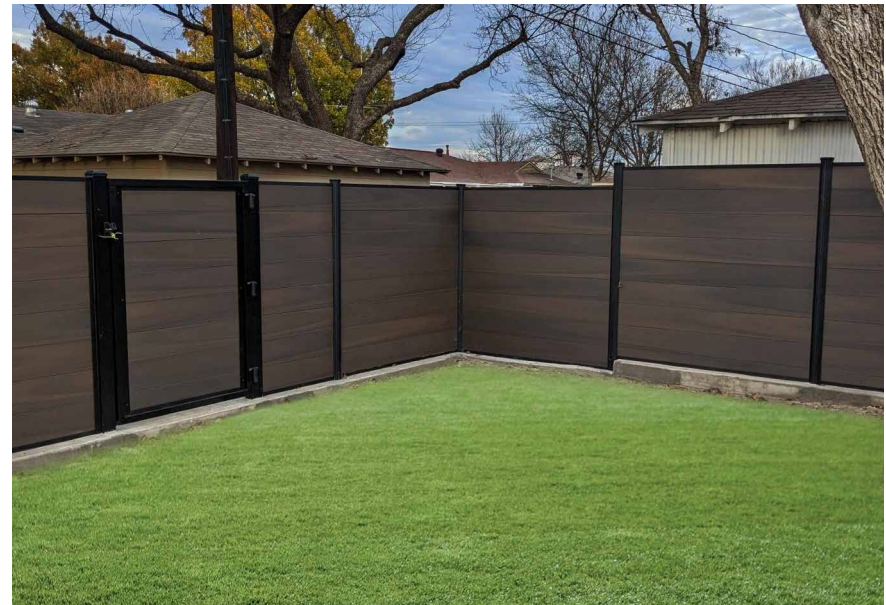
RENEWABLE RESOURCES & RENEWABLE ENERGY

We believe that how we manufacture is just as important as what we manufacture when it comes to going green. That's why we've traded in fossil fuels for renewable energy. Our products use solar power as part of our manufacturing process. We are fully committed to bringing you a product that's holistically eco-conscious.

Every Eva-Last range pairs recycled raw ingredients with bamboo for a stronger, more sustainable composite. Bamboo rejuvenates over 30 times faster than traditional hardwoods and it releases 35% more oxygen into our air. Eva-Last is internationally recognized for our commitment to the environment. We're proud of the work we do to promote environmental sustainability, and invite you to choose timber alternatives that are gentle on the Earth.

- **Made from recycled materials**
- **No trees felled**
- **No treatment or toxic chemicals required for maintenance**
- **Solar powered manufacturing processes**
- **Reduced impact on landfills (recyclable at the end of life)**
- **Reduced carbon footprint**





THANK YOU

If you have any questions regarding Evolver please feel free to contact us using the information below.

For more information:

E-mail: USAsales@eva-last.com

www.eva-last.com/us



LOW ENVIRONMENTAL IMPACT

Holistically sustainable manufacturing & use of raw materials

